



SERVICE BULLETIN

Overview:

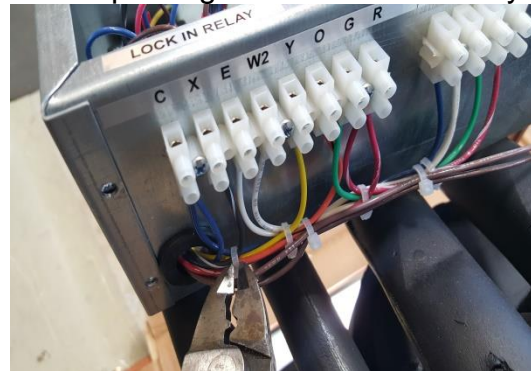
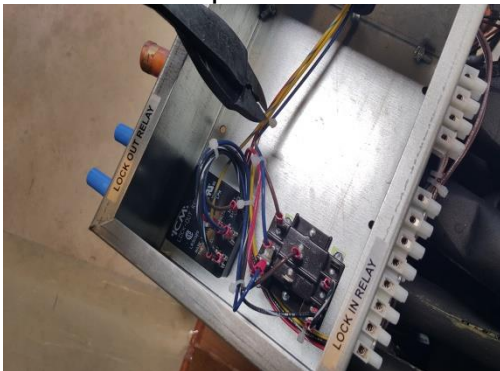
Classic Series units built between beginning 2014 and end of 2015 (Serial Numbers ETI-1401-000001 to ETI-1601-000001) that lock out on safety may, under certain conditions, get stuck in lock-out state and fail to reset.

Below is a description of the procedure to follow in order to correct the lock-out/lock-in relays wiring and address this issue. Also attached to this bulletin are the current Electric Diagrams of the SC, SCW(A) and SCW(D) units.

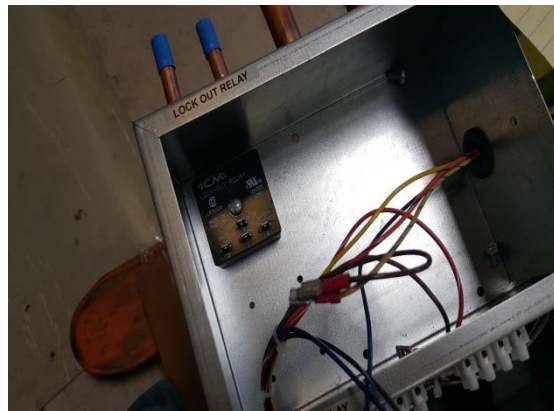
Contact: For further assistance, call ETI Technical Service at 1-863-701-0096.

Procedure:

Step 1: Remove all zip ties on harness and thermostat strip being careful to not cut any wires.



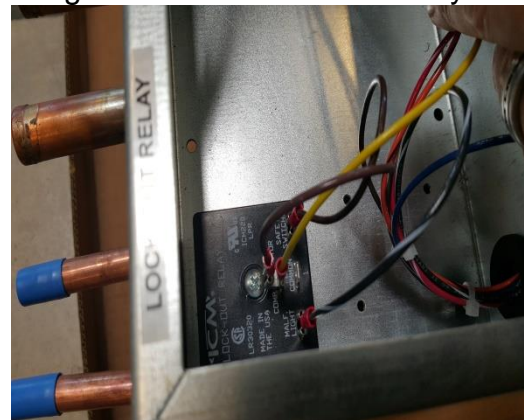
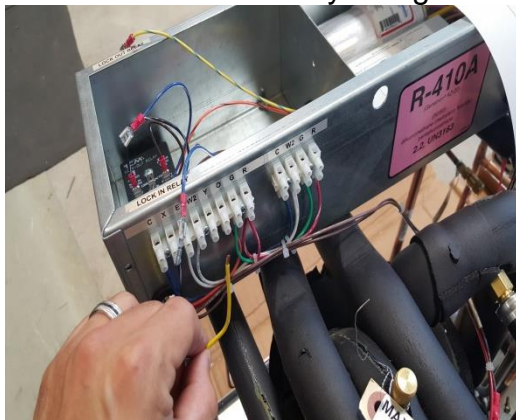
Step 2: Remove the lock-in relay.



Step 3: Connect the Black/White wire from the X terminal to the #3 terminal on lock-out relay and any one of the two wires from the safety switches to #4 terminal on lock-out relay.



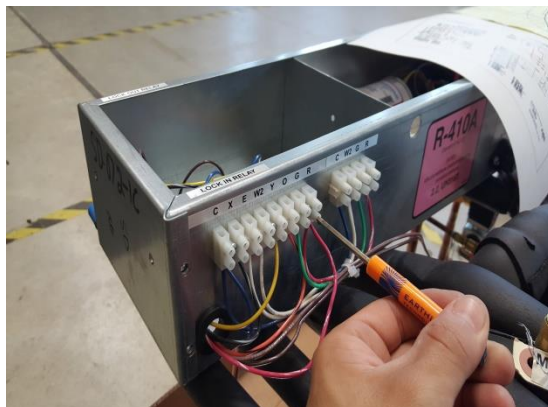
Step 4: Remove the yellow wire from the thermostat strip. Add a spade connector and place on terminal #2 of lock-out relay along with the remaining brown wire from the safety switches.



Step 5: Add a yellow wire (~10" length) from #1 terminal of the lock-out relay to Y terminal on the thermostat strip.



Step 6: Remove red wire.



Step 7: Strip and connect all common wires together.

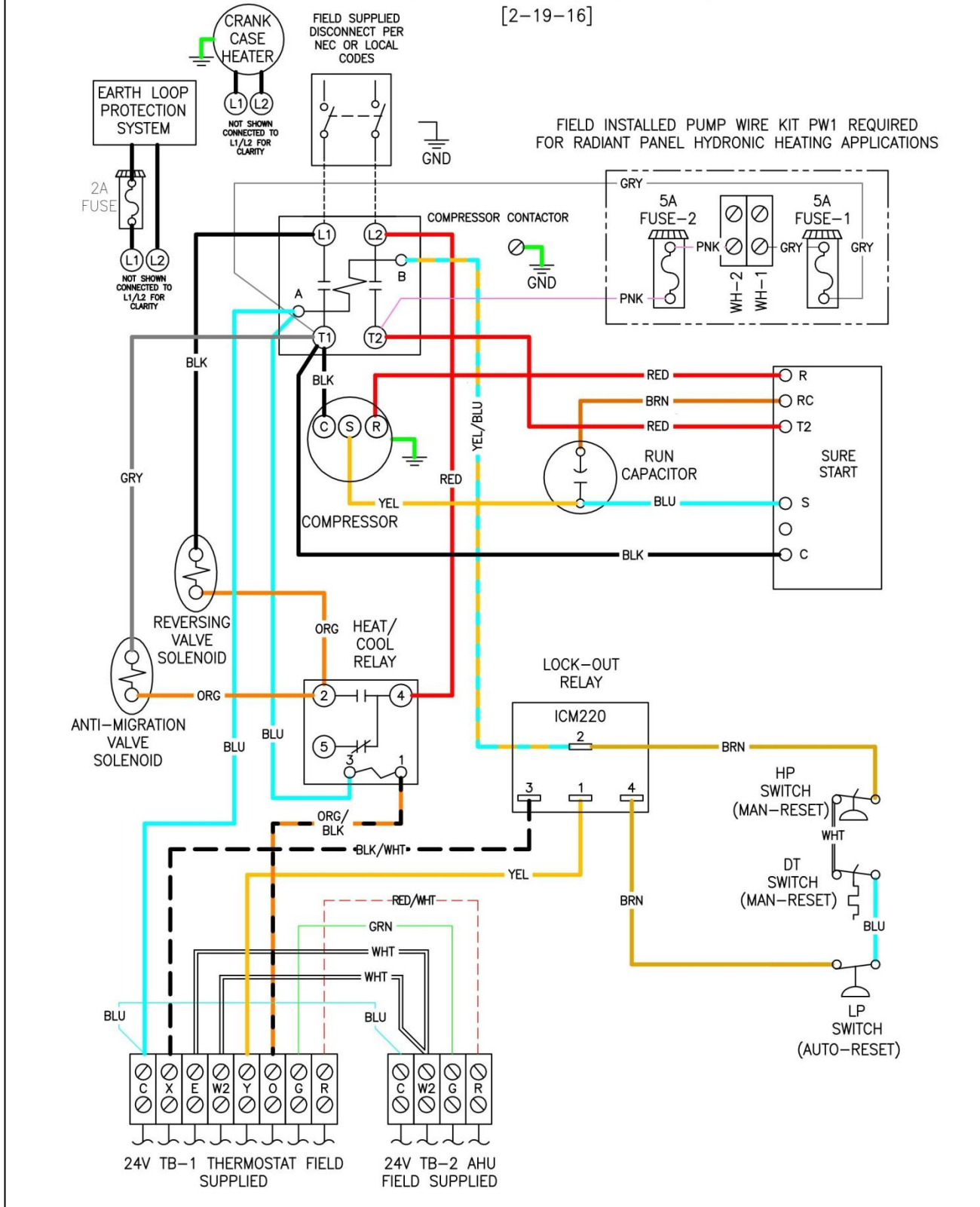


Electric Diagrams:

ELECTRICAL SCHEMATIC—SC UNIT

FIELD POWER SUPPLY: 230V, SINGLE PHASE, 60HZ

[2-19-16]

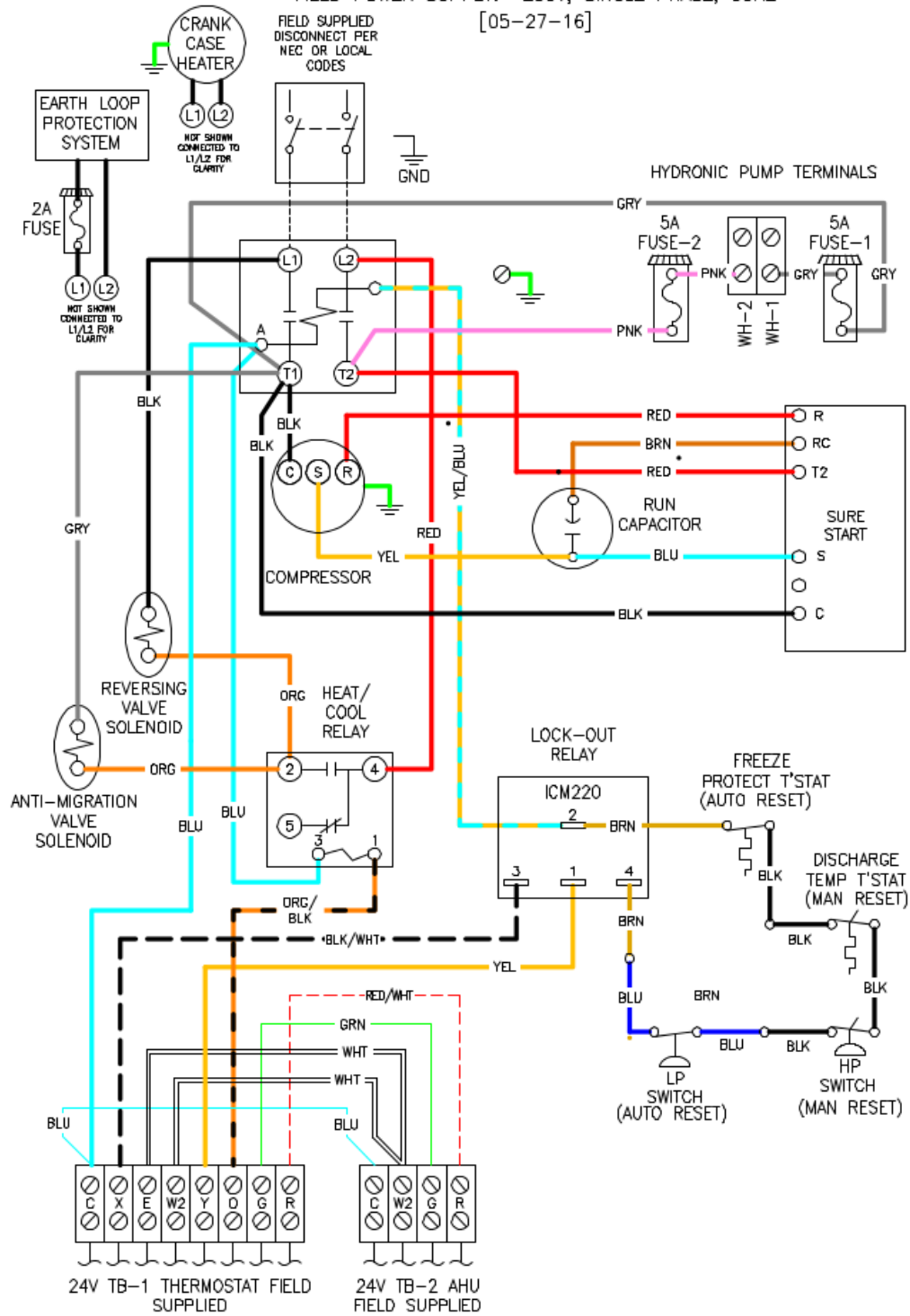


SC Compressor Unit Electrical Schematic Diagram, 230-1-60

ELECTRICAL SCHEMATIC—SCW(A) UNIT

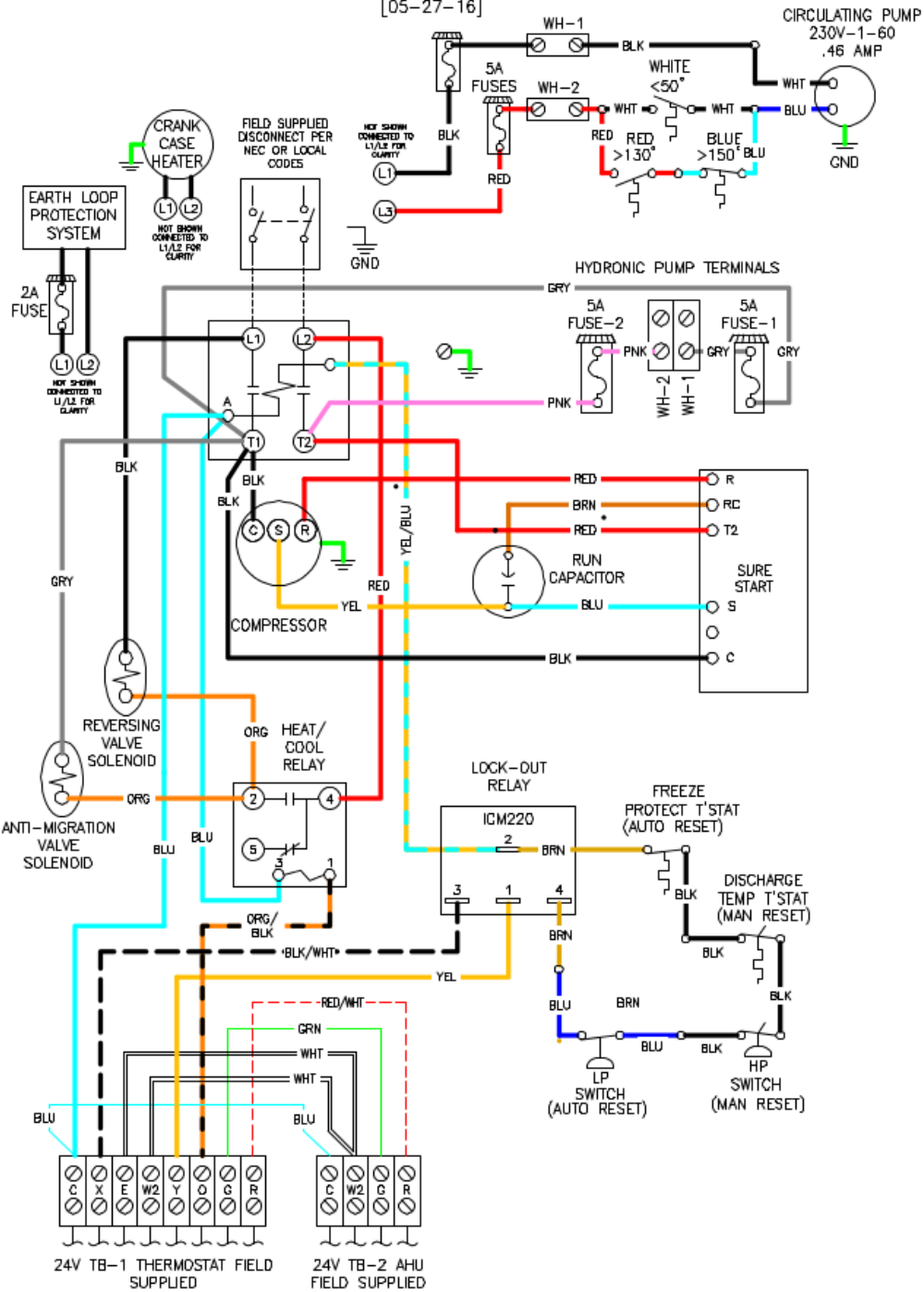
FIELD POWER SUPPLY: 230V, SINGLE PHASE, 60HZ

[05-27-16]



SCW(A) Compressor Unit Electrical Schematic Diagram, 230-1-60

ELECTRICAL SCHEMATIC-SCW(D) UNIT
 FIELD POWER SUPPLY: 230V, SINGLE PHASE, 60HZ
 [05-27-16]



SCW(D) Compressor Unit Electrical Schematic Diagram, 230-1-60