



EARTHLINKED
TECHNOLOGIES

Solid State Timer Kit (Model TM-5005)

Installation Manual

For

Commercial Water Heating

Disclaimer

Proper installation and servicing of this EarthLinked® Kit is essential to the reliable performance of the EarthLinked® system. All EarthLinked® systems and kits must be installed and serviced by an ETI authorized technician. Installation and service must be made in accordance with the instructions set forth in this manual. Failure to provide installation and service by an ETI authorized technician will nullify the limited warranty coverage for the system.

EarthLinked® Technologies shall not be liable for any defect, unsatisfactory performance, damage or loss, whether direct or consequential, relative to the design, manufacture, construction, application or installation of the field specified components.

Earthlinked Technologies, Inc.
4151 South Pipkin Road
Lakeland, Florida 33811
tel. 863-701-0096 • fax 863-701-7796
info@earthlinked.com • www.earthlinked.com
CSI # 23 80 00

Pre-Installation

Upon receipt of the equipment, check the model number (TM-5005) against the bill of lading.

The Solid State Timer Kit (TM-5005) is factory installed to all commercial water heating compressor units. When the compressor unit is operated under extended, continuous run conditions, the solid state timer provides the necessary heat source recovery time to ensure ongoing, efficient system performance.

The timer accomplishes this by turning the compressor unit “OFF” for 5 minutes for every 50 minutes of compressor accumulated run time. The 5 minute event turns off the compressor only. It does not turn off the blower or water pump.

This kit can be used as a service replacement for the original timer.

The timer is factory set for this cycle time. The timer is not field adjustable.

The following installation instructions are for applying the timer kit to EarthLinked® Commercial Water Heating Compressor Units.



WARNING

BEFORE REMOVING ANY ACCESS PANELS AND INITIATING ANY PHASE OF THIS INSTALLATION, MAKE SURE THAT POWER IS TURNED “OFF” TO ALL EARTHLINKED® AND FIELD SUPPLIED SYSTEM COMPONENTS. FAILURE TO DO SO COULD RESULT IN PROPERTY DAMAGE, SERIOUS INJURY OR DEATH.



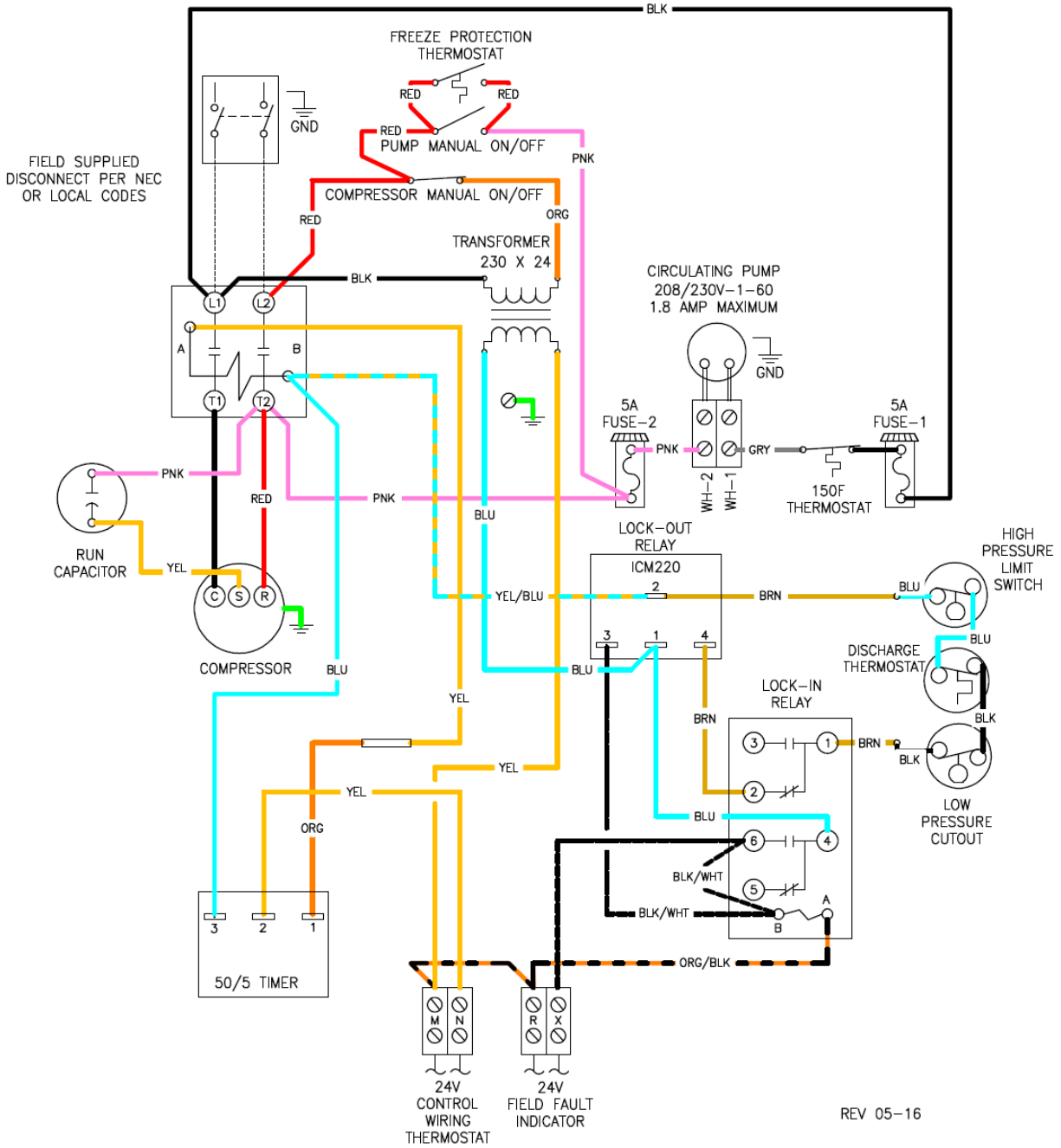
WARNING

WEAR ADEQUATE PROTECTIVE CLOTHING AND PRACTICE ALL APPLICABLE SAFETY PRECAUTIONS WHILE INSTALLING THIS EQUIPMENT. FAILURE TO DO SO MAY RESULT IN EQUIPMENT AND/OR PROPERTY DAMAGE, PERSONAL INJURY OR DEATH.

After turning power “OFF” to all EarthLinked® and field supplied system components at the appropriate breakers, remove the front and top panels of the compressor unit cabinet.

The electrical schematic for the commercial water heating compressor unit illustrating the TM 5005 solid state timer is shown on the next page. The installation instructions follow the electrical schematic.

ELECTRICAL SCHEMATIC – CWH UNIT
 FIELD POWER SUPPLY: 208/230V, SINGLE PHASE, 60HZ
 5-16-13



Commercial Water Heating Compressor Unit Electrical Schematic

Installation

A replacement timer should be installed as follows:

1. Turn power OFF to the EarthLinked[®] compressor unit and system.
2. Access the electrical control box.
3. Remove the blue, yellow and orange wires from the timer connections.
4. Remove mounting screw from current timer and install replacement timer in same location.
5. Replace the blue, yellow and orange wires on the timer terminals.
6. Check the wiring connections to ensure proper routing and good contact at the terminals.
7. Restore power to the system and run the compressor unit in the normal operating mode. Check to ensure timer is operating the compressor unit in the proper cycle - 50 minutes "ON", and 5 minutes "OFF".