



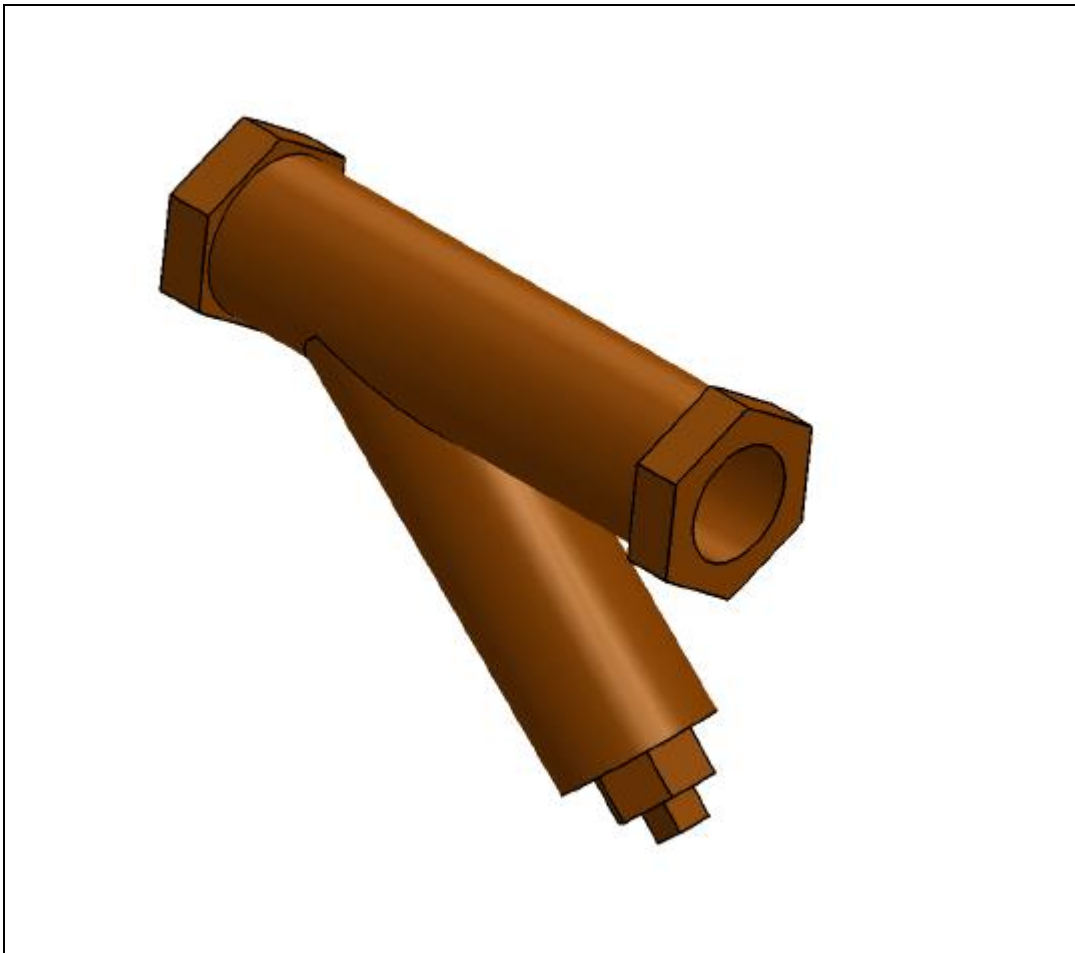
**EARTHLINKED**  
TECHNOLOGIES

# Strainer

## Models ST-1836 and ST-4272

### *Installation Manual*

CONTENTS	PAGE
Strainer Information	3
Strainer Installation and Maintenance	6



### **Disclaimer**

Proper installation and servicing of this EarthLinked® part is essential to the Heating and Cooling Systems reliable performance. All EarthLinked® systems and parts must be installed and serviced by an authorized, trained technician who has successfully completed the training class and passed the final examination. Installation and service must be made in accordance with the instructions set forth in this manual. Failure to provide installation and service by an authorized, trained installer in a manner consistent with this manual will nullify the limited warranty coverage for the system.

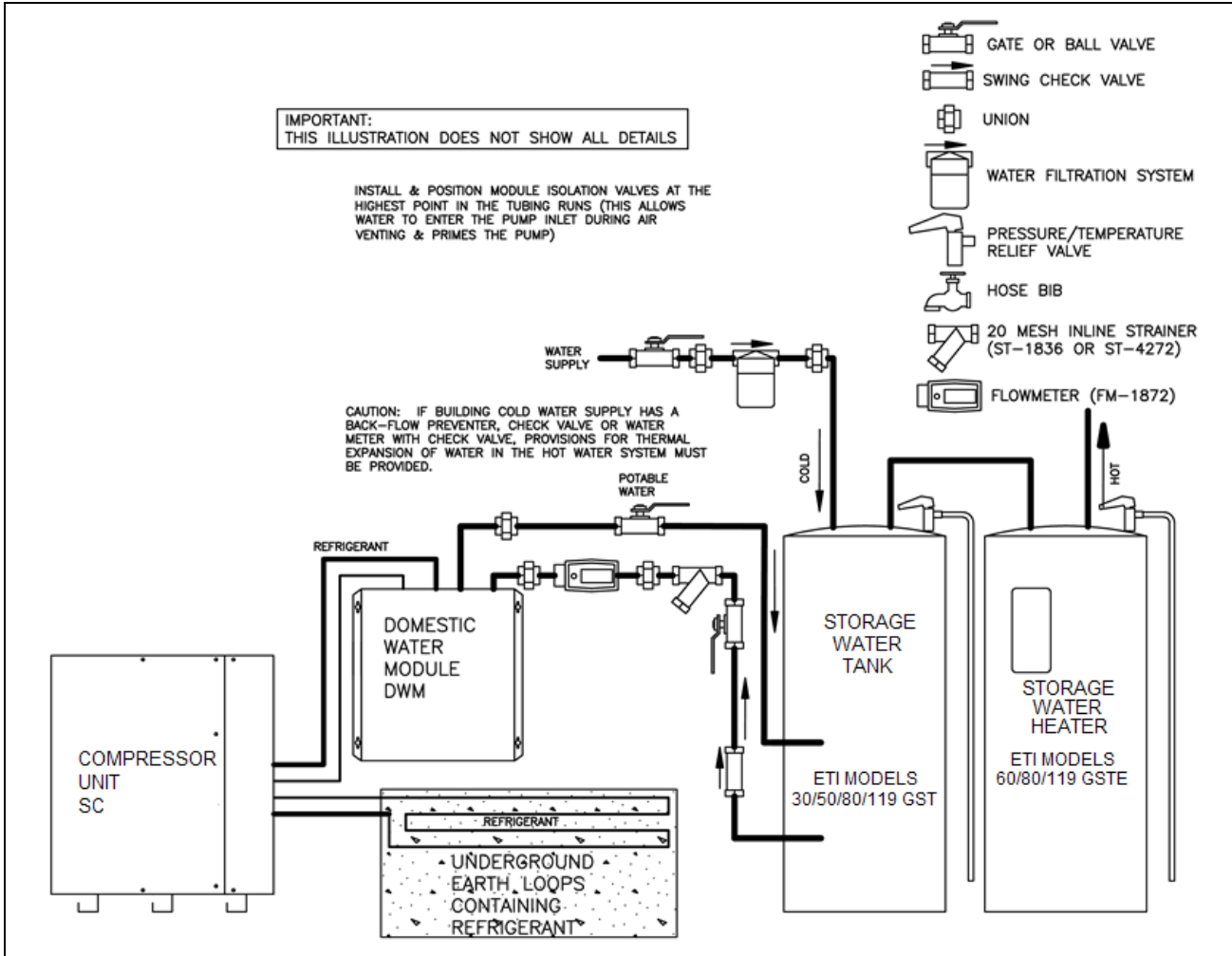
EarthLinked® Technologies shall not be liable for any defect, unsatisfactory performance, damage or loss, whether direct or consequential, relative to the design, manufacture, construction, application or installation of the field specified components.

Earthlinked Technologies, Inc.  
4151 South Pipkin Road  
Lakeland, Florida 33811  
tel. 863-701-0096 • fax 863-701-7796  
info@earthlinked.com • [www.earthlinked.com](http://www.earthlinked.com)  
**CSI # 23 80 00**

# Strainer Information

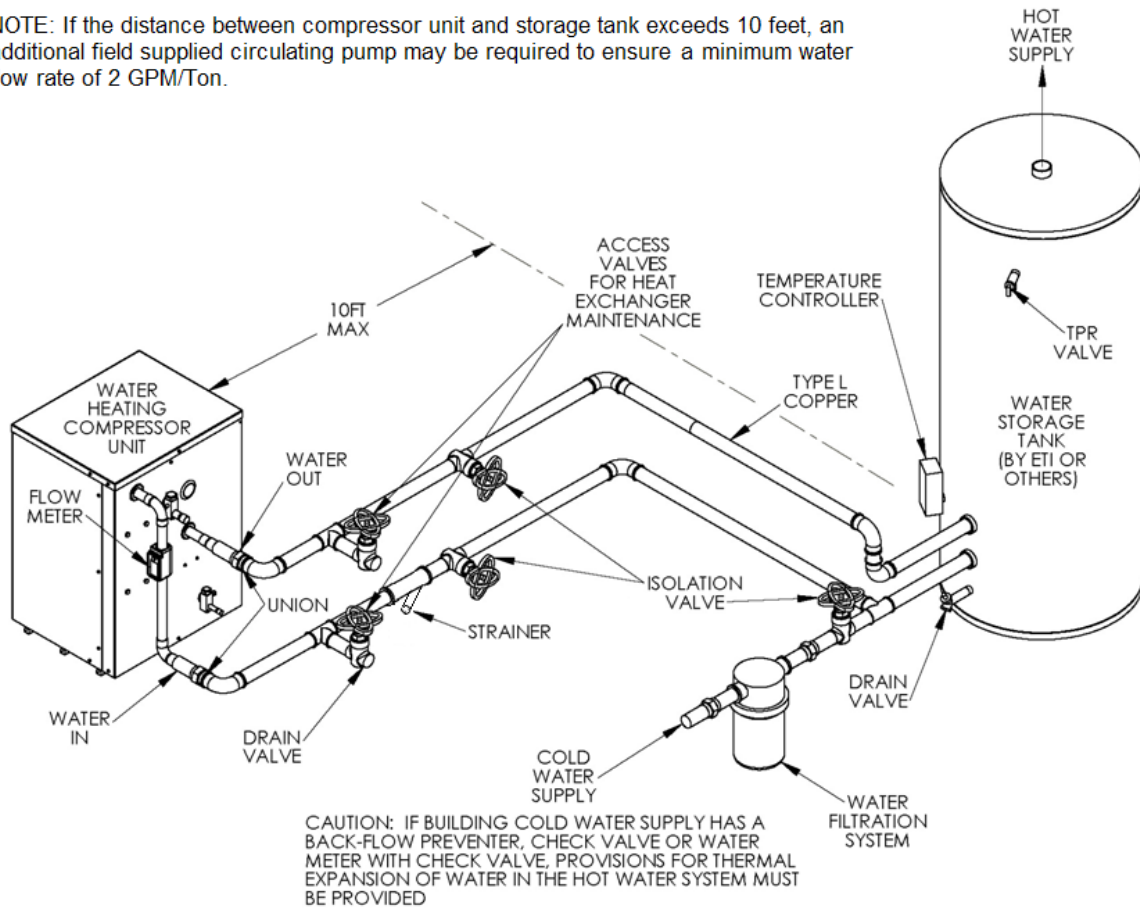
Models ST-1836 and ST-4272 are bronze Y-Strainers. The working pressure for water service is 200 psig at 150°F. The strainer has a 20-mesh stainless steel screen and is furnished with a blow-off outlet and plug for easy cleaning.

The strainer is necessary component of EarthLinked® Systems where service water is being heated by the system using brazed plate heat exchangers. Typical examples are illustrated in Figure 1 with the Domestic Water Module (DWM) and Figure 2 with the Commercial Water Heating System (CWH), both being utilized to heat service water.



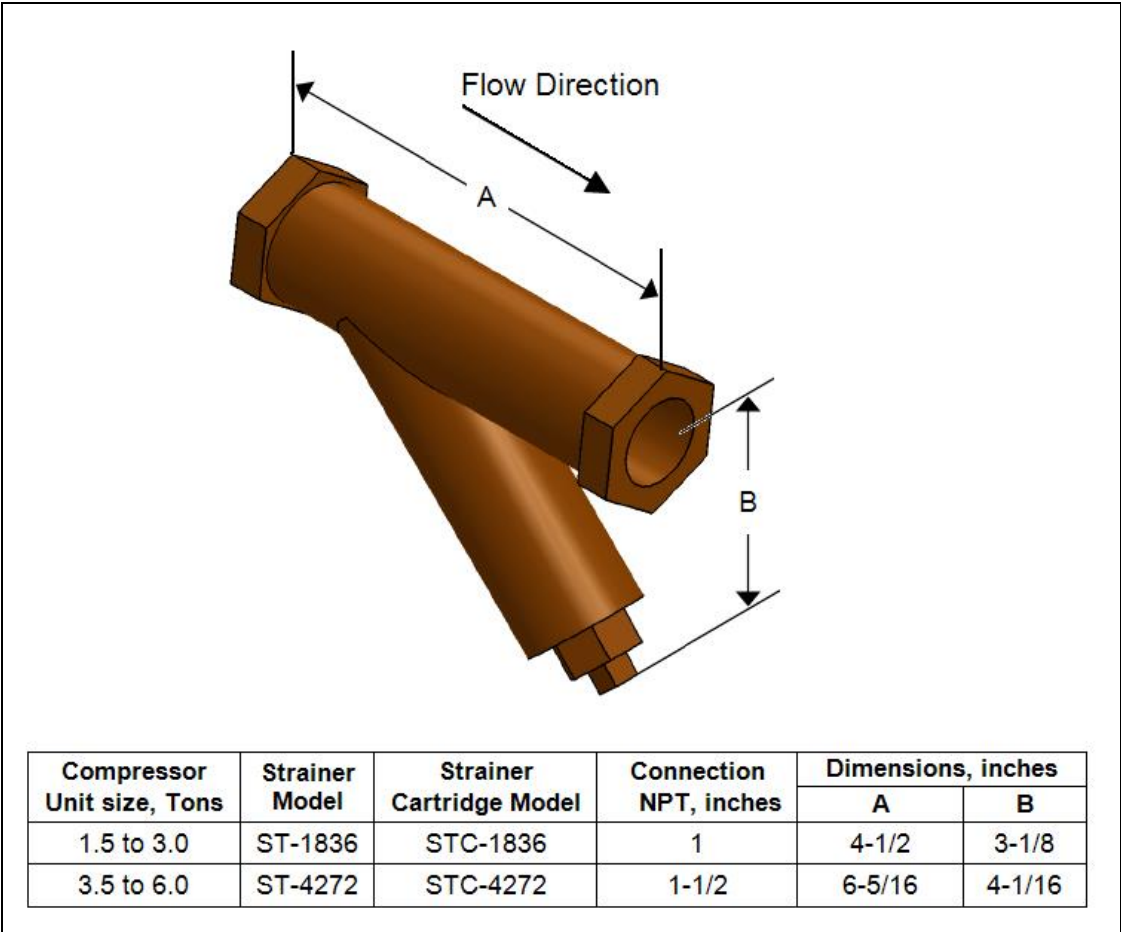
**Figure 1. Typical Domestic Water Module Installation**

NOTE: If the distance between compressor unit and storage tank exceeds 10 feet, an additional field supplied circulating pump may be required to ensure a minimum water flow rate of 2 GPM/Ton.



**Figure 2. Typical Commercial Water Heating Installation**

Figure 3 provides information showing the strainer models appropriate for EarthLinked® System compressor unit capacities in addition to dimensions and NPT connection sizes.



**Figure 3. Strainer Information**

## Strainer Installation and Maintenance

Installation of the strainer should always be directly upstream of the water inlet to the DWM or CWH as shown in Figures 1 and 2, in order to prevent particulate matter from restricting water flow through the heat exchanger channels.

Water flow should be in the direction shown by the arrow in the Figure 3, and the NPT connections should be sealed with a good grade of pipe sealant or tape.



### **WARNING!**

Always depressurize the water system before opening the strainer to conduct a maintenance check. Failure to do so could cause injury.

Maintenance of the strainer will depend on the quality of the water flowing through it. After installation, a maintenance check should be made on the strainer within 6 months to determine the amount of particulate matter trapped in that period of time. An appropriate maintenance schedule can be determined, based on the state of the strainer after the first 6 month inspection.

If there is a change in the quality of water due to water main repair or other disturbances in the water supply, the strainer should be checked shortly thereafter and cleaned.

The strainer cartridge can be cleaned after removal by flushing it with water. If it is necessary to replace the strainer cartridge, replacement cartridge model numbers are listed in Figure 3.